

Herne Hill, Herne Hill, SE24

1 bedroom flat - conversion for sale

£399,950

Share of Freehold

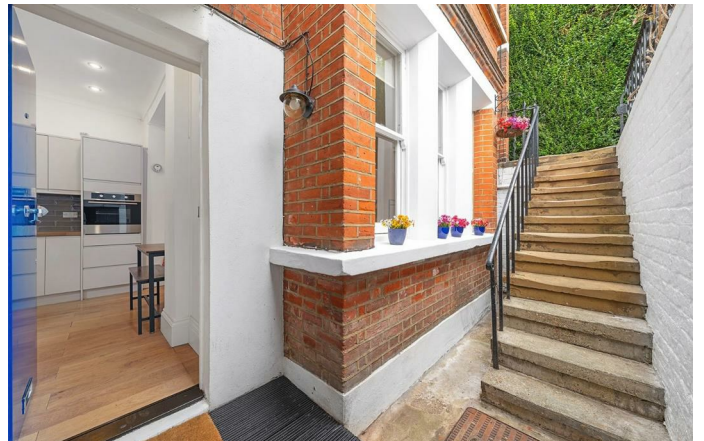
Property Details

A fantastic one double bedroom apartment with a private entrance and a large, leafy shared garden, peacefully set within an attractive detached Victorian townhouse. Tucked away from the street, a pretty front yard and steps lead to your own private entrance. The heart of the home is a spacious open-plan reception. The contemporary kitchen offers plentiful storage, a pantry, generous wooden worktops, integrated appliances and stylish tiled splashback with mood lighting. Ample space for dining flows into the bright lounge, where three sash windows, high ceilings and engineered wooden flooring create a welcoming, airy atmosphere. The generous bedroom continues the spacious theme, with three fitted wardrobes and room for a desk if desired. A bathroom with bathtub and overhead shower sits beside a separate WC, with potential to combine into one larger bathroom. Additional benefits include a secure, demised storage room and a large shared garden with two seating areas, mature planting and enhanced privacy due to the position of the surrounding buildings, perfect for relaxing or entertaining.

Features

- One double bedroom
- Large shared garden
- Detached Victorian conversion
- Private entrance
- Private, secure storage room
- Local amenities of Herne Hill
- Herne Hill station a six-minute stroll
- Easy access to Brixton and Dulwich Village
- Share of freehold
- Chain-free

Council tax band B EPC rating D (62)



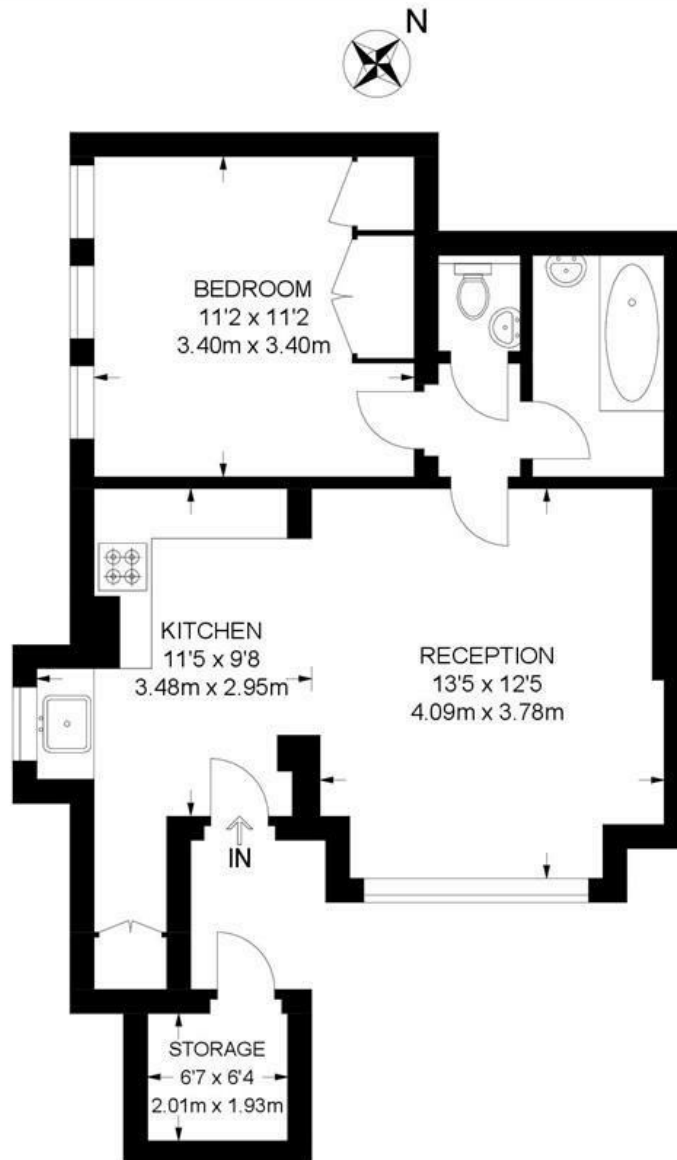
Herne Hill, Herne Hill, SE24

Herne Hill, SE24

1 Bedroom Flat

APPROXIMATE GROSS INTERNAL AREA WITH STORE : **513 SQ FT / 47.6 SQ M**

APPROXIMATE GROSS INTERNAL AREA WITHOUT STORE : **471 SQ FT / 43.7 SQ M**



LOWER GROUND FLOOR



While we try our very best, floor plans are produced as a guide only and we take no responsibility for the precise accuracy with which any property is represented.

Herne Hill, Herne Hill, SE24

